

# UnityVue

by  MACH7

Please visit [www.mach7t.com](http://www.mach7t.com) for full details on Mach7 Products

## The Mach7 UnityVue Workflow Orchestration Platform

**A comprehensive suite of tools in a single platform, unifying information and images to refine the radiologist interpretation process**

Streamline workflows and enhance image management to transform radiology across your enterprise.



# Unifying Radiology Workflows and Transforming Diagnostic Efficiency



**A revolutionary platform designed to address the pressing needs of modern radiology practices and healthcare delivery networks.**

## Why UnityVue?

Developed through the collaboration of NewVue and Mach7 Technologies, UnityVue combines advanced image management with AI-driven workflow orchestration, delivering an all-in-one, cloud-enabled solution that meets the challenges of today's healthcare landscape.

Radiologists and healthcare providers operate in environments where efficiency, accuracy, and accessibility are critical. UnityVue eliminates the complexity of navigating multiple systems, enabling seamless integration and improving decision-making for better patient outcomes.

# Revolutionizing Radiology and Healthcare with UnityVue

## The Challenge of Integration

Healthcare organizations often rely on fragmented systems, making it difficult to create a unified view of patient imaging data. This disjointed approach can lead to delays in diagnosis and treatment, inefficiencies in workflows, and increased stress for radiologists.



### Federating Multiple Systems:

Access imaging data from across platforms without complex migrations.



### Streamlining Workflows:

AI-powered prioritization ensures that the most critical cases are addressed first.



### Reducing IT Complexity:

Zero-footprint, cloud-based deployment minimizes IT overhead and downtime.

**Seamless Integration: UnityVue connects to existing PACS, EHRs, and reporting systems, preserving familiar workflows while modernizing operations.**



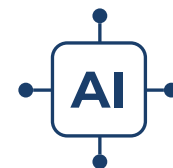
### All-in-One Radiology Platform:

Integrates imaging, AI-driven workflows, and modern reporting solutions into a unified interface.



### Cloud-Enabled Flexibility:

Offers remote access and eliminates the need for on-site servers.



### AI-Driven Insights:

Enhances diagnostic accuracy with integrated third-party AI tools.



### Dynamic Worklists:

AI-curated study prioritization tailored to clinical severity, SLA requirements, radiologist credentials, and reading preferences.

# Key Features of UnityVue

Innovative features are tailored to the unique needs of radiology professionals

**All-in-One Platform:** Combines imaging, workflow orchestration, and AI-driven decision support into a single system.

**Cloud-Enabled and Zero-Footprint:** Enables remote access and seamless updates without the need for local installations.

**AI-Powered Workflow:** Automatically prioritizes studies based on clinical severity, SLA requirements, radiologist credentials, and individual preferences, ensuring critical cases receive immediate attention.

**Clinical Data Aggregation:** Consolidates patient data across multiple systems, providing a complete clinical picture.

**Radiologist Cockpit:** Inspired by aviation design, this intuitive interface offers streamlined access to clinical insights, patient history timelines, and a centralized hub for third-party AI findings and modern reporting solutions.

**Secure and Reliable Cloud Hosting:** Ensures data integrity with end-to-end encryption and automatic failover mechanisms.

**Federated Archives:** Enables access to prior studies from disparate systems without costly migrations.

**Gamification for Well-Being:** Turns routine tasks into engaging challenges, enhancing productivity and satisfaction.



# Why UnityVue Matters

## For Clinicians and Patients

### Improved Efficiency:

Faster access to complete imaging data for quicker and more confident diagnoses.

### Better Patient Care:

Unified data and AI insights lead to more informed treatment decisions.

### Increased Satisfaction:

Simplified workflows reduce burdensome manual tasks and enhances user satisfaction.

## For Healthcare Organizations

### Cost Savings:

Avoid expensive migrations by focusing on relevant data.

### Future-Proof Design:

Adaptable to new technologies, ensuring long-term value.

### Enhanced Outcomes Support:

Efficiency gains support radiology workflows and diagnostic confidence.

## Contact Us to Learn More

Discover how UnityVue can transform your radiology workflows and elevate patient care.



Schedule a demo today at  
<https://www.mach7t.com/solutions/unityvue>